



# EVENT OUTLINES

## TAHITI OCEANIA OPEN 2026 FRENCH POLYNESIA

June, 13<sup>th</sup> – 14<sup>th</sup> 2026

(version 16 March 2026)





# Tahiti Oceania Open 2026

June, 13<sup>th</sup> - 14<sup>th</sup> 2026



Dear friends of the judo family,

On behalf of the Oceania Judo Union, it is my great pleasure to welcome athletes, coaches, officials and supporters to the Oceania Open in Tahiti on 13–14 June 2026.

We are particularly delighted to welcome the Oceania Open back to Tahiti, a place that holds a special position in the judo community of our region. French Polynesia has a proud history of hosting exceptional judo events, and we are grateful to the Fédération Polynésienne de Judo, the organising committee and volunteers whose commitment has made the return of this event possible.

The Oceania Open is an important fixture in the international judo calendar and provides a valuable opportunity for athletes from across Oceania and around the world to compete at a high level while strengthening the spirit of friendship that defines our sport. Our region is built on connection, mutual respect and shared development, and events like this bring those values to life on the tatami.

Tahiti offers a truly unique setting for our judo family to come together. The energy, culture and hospitality of French Polynesia create an environment that celebrates both sporting excellence and the spirit of the Pacific.

To all athletes competing, we wish you the very best. May your performances reflect the values of respect, courage and friendship that are at the heart of judo.

We look forward to welcoming you to Tahiti and to an outstanding Oceania Open.

**Kate CORKERY**  
**President**  
**Oceania Judo Union**



# Tahiti Oceania Open 2026

June, 13<sup>th</sup> - 14<sup>th</sup> 2026



Dear friends of the judo family,

It is a great pleasure and a source of pride for our Federation to host the 4th edition of the Oceania Open in Tahiti, especially as this marks our third consecutive edition of the event.

The continuity of this competition reflects the strong relationship of trust with the Oceania Judo Union, which has recognized the quality of the event organization in French Polynesia by entrusting us with the organization of the 2027 Oceania Championships.

This trust has also been built through close collaboration with key sports institutions, notably the Youth and Sports Institute of French Polynesia, whose support has been unwavering since the first edition.

Drawing on past experience, we continue to enhance our efforts to welcome foreign delegations by reducing accommodation-related costs, while further improving the quality of services and the overall experience for participants.

**Stéphane GUSTIN**  
**President**  
**Polynesian Judo Federation**



# Tahiti Oceania Open 2026

June, 13<sup>th</sup> - 14<sup>th</sup> 2026



## 1. GENERAL INFORMATION

### Fundamental Principles

All National Federations, officials, coaches and athletes participating in the event described in these outlines must respect and accept the authority of the IJF/OJU Officials, the IJF Statutes, the IJF SOR and the IJF Antidoping Rules. Individual deemed to have acted against the IJF, its principles or purposes should be subject to suspension or expulsion from the event and/or cancellation of their accreditation cards.

### Participation rules

The Oceania Judo Open is open for all IJF member Federations. There is no limit in the number of participants for each weight category for every Federation.

Any participant is eligible for each weight category for every Federation.

Any participant is eligible to be inscribed in the competition provided he/she is:

- Not under a disciplinary suspension.
- Not under suspension for antidoping rule violation.
- Not carrying any communicable diseases that may risk other delegates' health.

In addition to the above athletes must:

- Not be under medical suspension.
- Be healthy and fit for competition.
- Born in 2011 and before (minimum 15 years in the calendar year) or before. Any National Federation entering athletes that are not of the correct age will be subject to an investigation and possible disciplinary action.
- Have sufficient technical knowledge (know the terminology and can execute all the technics in the and understand fully the published IJF sport and Organisation Rules – SOR (<https://sor.ijf.org>)).

All participants must have a valid IJF card and be inscribed by their National Federation in Judobase (<https://admin.judobase.org>).



# Tahiti Oceania Open 2026

June, 13<sup>th</sup> - 14<sup>th</sup> 2026



## Entering French Polynesia

The LOC can provide official documentation such as letters of invitation or confirmation of participation to support visa application only for people who are inscribed in Judobase for the event. The decision to grant a visa rest solely with the relevant immigration authorities.

Athletes and officials are responsible for ensuring compliance with the visa requirements of the host country. Entry to French Polynesia must comply with Visa rules and regulations. It is the individual responsibility to ensure you apply for the correct visa.

Entry rules may be subject to change, please carefully check the visa requirements to enter French Polynesia as well as the possible transit visa requirements into other countries.

## 2. CONTACT & ADDRESS

Local Organizing Committee

Name	Polynesian Judo Federation
LOC President	Mr Stephane GUSTIN
Email	<a href="mailto:president@fpj.pf">president@fpj.pf</a>
All enquiries	<a href="mailto:tahitiopen@fpj.pf">tahitiopen@fpj.pf</a>

**PAY ATTENTION TO FRAUDULENT EMAILS!  
USE ONLY THE EMAIL ADDRESSES FROM THE OFFICIAL OUTLINES.**

Competition venue

Competition venue	Complexe Sportif Boris Leontieff
Address	98701 Arue (GPS coordinates : <b>-17.5253,-149.53284</b> )



# Tahiti Oceania Open 2026

June, 13<sup>th</sup> - 14<sup>th</sup> 2026



## 3. DEADLINES

Event inscription

All participants and delegates must be registered for this event in the IJF Registration System (JUDOBASE): <https://admin.judobase.org>

Deadline for JUDOBASE Registration is **Friday, 29 May 2026.**

In case of unforeseen delay of arrival or cancellations from the event you must inform the LOC ([tahitiopen@fpj.pf](mailto:tahitiopen@fpj.pf)), and IJF registration ([registration@ijf.org](mailto:registration@ijf.org)).

Whenever possible, cancellations should be made before accreditation. Any cancellation of an athlete during accreditation without replacement will result in the following penalty:

- If registered athletes are cancelled during accreditation without previous notification to LOC and IJF registration, a penalty of 100 USD per athlete will apply.
- This penalty will be charged by the OJU to the National Federation.

Visa application	Monday, 20 April 2026
Judobase registration	Friday, 29 May 2026
Fee payment	Friday, 12 June 2026

## 4. ENTRY FEES AND PAYMENT

The entry fee of 100 USD per athlete must be paid.

All bank fees and bank transfer costs must be paid by the participating national federation to the following bank. **For bank transfers, the total amount due for registrations must be increased by 5%.**

Beneficiary's Name	ASS FEDERATION POLYNESIENNE DE JUDO
Bank Name	BANQUE DE TAHITI
Bank Address	IMMEUBLE TEREMA, 98716 PIRAE, TAHITI
Account Number (IBAN)	FR76 1223 9000 0713 1092 0100 110
BIC Code	CEPAPFTP
Payment Reference	JUDO TAHITI OPEN 2026

**PAY ATTENTION TO FRAUDULENT EMAILS!  
USE ONLY THE BANK DETAILS FROM THE OFFICIAL OUTLINES.**



# Tahiti Oceania Open 2026

June, 13<sup>th</sup> - 14<sup>th</sup> 2026



## 5. PROGRAMME

Friday, 12 June 2026		
10:00 - 15:00	Accreditation	Complexe Sportif Boris Leontieff, Arue
15:30 - 16:00	Unofficial weigh-in	Complexe Sportif Boris Leontieff, Arue
16:00 - 16:30	Official weigh-in Women: -48 kg; -52 kg; -57 kg; -63 kg Men: -60 kg; -66 kg; -73 kg	Complexe Sportif Boris Leontieff, Arue
17:00 - 18:00	Draw	Online
Saturday, 13 June 2026		
Competition Day 1: Women: -48 kg; -52 kg; -57 kg; -63 kg / Men: -60 kg; -66 kg; -73 kg		
09:00	Referee meeting	Complexe Sportif Boris Leontieff, Arue
10:00	Preliminaries, repechage & semi-finals	Complexe Sportif Boris Leontieff, Arue
TBD	Final block: bronze & gold medal contests	Complexe Sportif Boris Leontieff, Arue
15:00 - 15:30	Unofficial weigh-in	Complexe Sportif Boris Leontieff, Arue
15:30 - 16:00	Official weigh-in Women: -70 kg; -78 kg; +78 kg Men: -81 kg; -90 kg; -100 kg; +100 kg	Complexe Sportif Boris Leontieff, Arue
Sunday, 14 June 2026		
Competition Day 2: Women: -70 kg; -78 kg; +78 kg / Men: -81 kg; -90 kg; -100 kg; +100 kg		
10:00	Preliminaries, repechage & semi-finals	Complexe Sportif Boris Leontieff, Arue
TBD	Final block: bronze & gold medal contests	Complexe Sportif Boris Leontieff, Arue

Training sessions can be booked by contacting the LOC for the following days:

- Thursday, 11 June at Federal Dojo Arue: from 17:30 to 19:30
- Friday, 12 June at Complexe Sportif Boris Leontieff, Arue: from 09:00 to 17:00



## 6. COMPETITION RULES

### Accreditation & Control of Nationality

At least one team delegate must attend the accreditation on Friday in order to confirm the entries of all athletes and officials. A delayed appearance or no-show may result in the exclusion of all participants from the draw and the event.

In case of unforeseen delay of arrival or cancellations from the event you must inform the LOC ([tahitiopen@fpj.pf](mailto:tahitiopen@fpj.pf)), and IJF registration ([registration@ijf.org](mailto:registration@ijf.org)).

Passports or photocopies of passports from all competitors must be available on request (national ID Card showing nationality, picture and date of birth or a copy is also accepted).

For each official team member from a delegation (athletes, coach, team official, doctor etc.) an accreditation card is issued by the OJU during the official registration. A delegate should never wear another delegate's accreditation card remains the property of the OJU and can be withdrawn, with immediate effect, at the OJU's sole discretion.

If any delegate loses his accreditation card, he must inform the LOC immediately to obtain a new card by paying 20 USD.

### Categories & competition format

Men categories	-60 kg, -66 kg, -73 kg, -81 kg, -90 kg, -100 kg, +100 kg
Women categories	-48 kg, -52 kg, -57 kg, -63 kg, -70 kg, -78 kg, +78 kg

The event will be held with quarter-final repechage (best 8). The competition will be carried out according to the rules and sporting codes of the IJF.

### Draw

The draw will be held online: [www.judotv.com](http://www.judotv.com). The top eight from the entered competitors in each weight category will be seeded according to the current IJF World Ranking List.



# Tahiti Oceania Open 2026

June, 13<sup>th</sup> - 14<sup>th</sup> 2026



## Weigh-in

Official weigh-in for each weight category is held the evening before the competition day (see Programme). Athletes must present their accreditation card and their passport (National ID Cards showing nationality, picture and date of birth are also accepted).

Test scales and official scales will be available on Friday and Saturday from 09:00 (except during official weigh-in) at the Complexe Sportif Boris Leontieff, Arue.

## Random Weigh-in

Random weight checks for athletes will be organised in the morning before the start of the competition.

## Judogi Control

Please refer to the IJF SOR Appendix C IJF Judogi rules.

In this event Judogi control takes place on the day of the competition and will be done before each contest.

## Approved Judogi & Backnumber

Please refer to the IJF SOR Appendix C IJF Judogi rules.

Athletes must compete wearing an IJF approved judogi (white and blue) with a backnumber bearing their last (family) name and country code as registered in Judobase.

The list of official judogi and backnumber suppliers can be found here: [www.ijf.org/supplier-list](http://www.ijf.org/supplier-list).

## Markings and Advertising

Please refer to SOR Appendix C

### Coaching

All coaches must fully adhere to the Code of Conduct for Judo Coaches.

Dress Code:

- Elimination rounds: national track suit with trousers reaching down to shoes (no flip-flops) or formal suit (jacket, trousers, shirt, and tie for men; jacket, trousers/skirt/dress, blouse for women) and formal shoes (no sport shoes or flip-flops).
- Final block: formal suit (jacket, trousers, shirt, and tie for men; jacket, trousers/skirt/dress, blouse for women) and formal shoes (no sport shoes or flip-flops).

### Awarding ceremony

Each athlete who has won a medal must be present at the ceremony to receive their medal personally. Any athlete who is absent from the awards ceremony without a good reason may forfeit the medal.

Athletes must attend the medal ceremony barefoot, without any hat, cap or any similar head covering and wearing their IJF approved white judogi that conforms to the IJF judogi rules with special attention being paid to the publicity rule. If it is not clean, then they must wear a reserve judogi.

### Medals

First place - Gold medal

Second place - Silver medal

Third places (x2) - Bronze medals

### World ranking points

An athlete is in the competition only once they pass the official weigh-in. If an athlete passes the official weigh-in and is alone in the category he/she will get the participation ranking points, if applicable. Any athlete who does not come to the tatami for a contest will have a line put through his/her name on the draw sheet. His/her opponent must come to the tatami and bow. He/she will be declared the winner by fusen-gachi and WRL points will be given.



# Tahiti Oceania Open 2026

June, 13<sup>th</sup> - 14<sup>th</sup> 2026



## Anti-Doping

Doping control will be executed according to the IJF MEDICAL AND ANTI-DOPING HANDBOOK (IJF SOR – Appendix E).

## Responsibility of federations

Please refer to IJF SOR 1.3 Insurance and Civil Liability.

## Media

Journalists can apply for Media accreditation by mail to [tahitiopen@fpj.pf](mailto:tahitiopen@fpj.pf)

## Consent for Photography/Videos/Filming

Please refer to IJF SOR 2.8.5 Consent for use of data/photography/videos/filming.

The national federation must ensure that they have the permission of each delegate or in the case of a minor the permission of the parent/guardian. If a delegate does not give consent for use of data, photography, videos and filming then the National Federation must inform the Oceania Judo Union by writing to [communication@oceaniajudo.com](mailto:communication@oceaniajudo.com).

### 7. ACCOMMODATION AND TRANSPORT

The LOC proposes the following hotels. The participants may book the accommodation on their own.

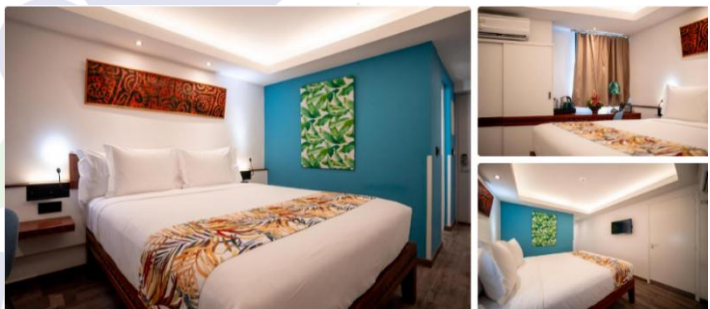
No transportation is foreseen during the event.

#### CATEGORY A:



TAHITI BY PEARL***	
Address	Lafayette Beach, PK7, Mahina - Tahiti
Reservation	+689 40 48 88 00
Email	<a href="mailto:reservation@pearlresorts.com">reservation@pearlresorts.com</a>
Website	<a href="https://www.letahiti.com">https://www.letahiti.com</a>
Gym	Yes
Wi-Fi	Yes
Restaurant	Yes
Distance from the venue	3.4 km
Distance from the airport	13.4 km

#### CATEGORY B:



MAITAI EXPRESS TAHITI **	
Address	avenue du Prince Hinoi, Papeete - Tahiti
Reservation	+689 40 80 36 00
Email	
Website	<a href="https://hotelsmaitaiexpresstahiti.com">https://hotelsmaitaiexpresstahiti.com</a>
Gym	No
Wi-Fi	Yes
Restaurant	No
Distance from the venue	4.5 km
Distance from the airport	6.5 km

### 8. TRAINING CAMP

The training camp will be organised at the Federal Dojo in Arue from Monday 15 to Wednesday 17 June 2026.

Training camp venue	Dojo Arue
Address	rue Tamahana, 98701 Arue - Tahiti

#### Programme

Monday 15 June 2026	17:00 to 19:00
Tuesday 16 June 2026	17:00 to 19:00
Wednesday 17 June 2026	17:00 to 19:00

#### Registration

Registration by email to LOC – [tahiopen@fpj.pf](mailto:tahiopen@fpj.pf)

Fee: Free

#### Accommodation and transport

The LOC proposes the above hotels. The participants may book the accommodation on their own.

No transportation is foreseen during the training camp.



[www.oceaniajudo.com](http://www.oceaniajudo.com)