



PANAMERICAN JUDO CONFEDERATION

Outlines

PANAMERICAN – OCEANIA SENIOR CHAMPIONSHIPS – INDIVIDUAL & MIXED TEAM –

LIMA - PERU
APRIL 15th – 17th

VERSION 15/03/2022





PJC

PANAMERICAN – OCEANIA SENIOR CHAMPIONSHIPS
PANAMERICAN – OCEANIA MIXED TEAMS SENIOR CHAMPIONSHIPS

**WELCOME OF THE PRESIDENT OF
PANAMERICAN JUDO CONFEDERATION**



Dear Judo community,

The time has come to restart the on-site calendar in 2022 and, what better way to do it than to invite you to participate in an unprecedented event for our region.

PJC, together with IJF, has been working hard to implement policies and good practices that benefit the development of people and promote values such as self-improvement. That is why I am honored to announce the realization of the continental event of the Americas, merged with the continental event of Oceania.

Here, we have a great chance to demonstrate the bonds of judo brotherhood, along with the sporting capabilities of two continents, in a mega event merged.

That is why I am honored to invite you to the Oceania/Pan American Championships, Lima 2022, in the Cadet, Junior, and Senior categories developed together with the Oceania Judo Union.

We will compete together as one continent and help each other strengthen our judo. Something that, until last year, had only been done between the Asian continent in conjunction with Oceania.

In addition, we worked out a plan with the International Judo Federation to conduct the IJF "A" referee exams and the "B" referee exams. There will also be a training camp for referees. All this will be in charge of the world's refereeing director.

It is also important to highlight that PJC will organize the first "PJC training camp"; where we will have Olympic and world medalist speakers, and both Cadet, Junior, and Senior athletes will be able to get benefit from this, as well as their coaches.

I want to thank everyone for the work they have been doing, with the certainty that this new event will be a success for our judoka and our continent.

See you in Lima!



Carlos Zegarra Presser
President
Panamerican Judo Confederation

**WELCOME OF THE PRESIDENT OF
OCEANIA JUDO UNION**

Dear judokas from Oceania and Pan America,

For me, it is a great pride and a huge responsibility to merge the most important continental event for our sports organizations.

For some years, we worked in partnership with the Asian continent. They opened their doors to us, and together we were able to organize successful events in favor of the judokas of our region.

On this occasion, I am convinced that it will also be successful, and together with the Pan American Judo Confederation, we will take an important step.

That is why we cordially invite you to participate in the Cadet, Junior, and Senior Championship, "Oceania/Pan America Lima 2022", to be held in Lima, Peru.

Together, we will be more than a continent!



Rehia Davio
President
Oceania Judo Union

**WELCOME OF THE PRESIDENT OF
PERUVIAN JUDO FEDERATION**

Dear friends,

It is an honor for us to host the most important events on the continent. On behalf of the Peruvian Judo Federation, I am pleased to invite you to participate in the first edition of the Pan American Championships in conjunction with the Oceania Championships in the cadet, junior and senior categories to be held in the city of Lima on April, 9th until April, 17th, 2022.

We would also like to count on your participation in the events that we will host at this sports festival: Continental and international referee exam, a training camp for athletes, and a refereeing seminar for officials.

As hosts, we are working to ensure all the necessary measures to guarantee the health of the judo family so that everyone enjoys their stay with us.

We are pleased to thank the Panamerican Judo Confederation and the International Judo Federation for their support and confidence in organizing these events in Lima.

Our best wishes of good health and a strong spirit to all participants. Welcome to Peru!



María Martínez Murciego
President
Peruvian Judo Federation



PJC

PANAMERICAN – OCEANIA SENIOR CHAMPIONSHIPS
PANAMERICAN – OCEANIA MIXED TEAMS SENIOR CHAMPIONSHIPS

IMPORTANT INFORMATION REGARDING THE COVID-19 PANDEMIC

ANYONE NOT FOLLOWING THE LOCAL GOVERNMENT AND IJF COVID-19 PROTOCOLS WILL BE REMOVED FROM THE EVENT AND SUBJECT TO DISCIPLINARY ACTION!

The fundamental principle throughout all IJF / PJC / OJU events during the COVID-19 era is to Protect and Be Protected by wearing a mask, sanitising, distancing and respecting the recommendations of "the Protocol for resuming IJF events during the COVID-19 pandemic" hereafter referred to as the IJF COVID-19 Protocol. All participants have the mutual responsibility to protect each other.

Each National Federation delegation participant (athlete, coach, team official, physiotherapist, doctor President etc.) must have read and understood the latest version of the IJF COVID-19 Protocol which can be found here: covid.ijf.org

The COVID-19 vaccines provide protection to the vaccinated only against seriously falling ill, but not against getting infected or transmitting the virus to somebody else, even if the chances of the latter is very low. Therefore, until vaccination reaches a high level among the judo family and there are other effective preventive methods available, or until it is globally accepted to conduct activities without safety measures, all the participants of any IJF event must follow the same protocol (being PCR tested before the event, upon arrival, during the event, wear a mask, wash hands, follow the bubble system, etc.) to protect and be protected, in the spirit of unity and solidarity which is in our community's moral code.

COVID-19 DOCUMENTS

All pre-event COVID-19 documents must be sent to bioseguridad@judoperu.org before travelling. Fourteen (14) days after the event, all data will be deleted.

EVENT PARTICIPATION

To participate in an IJF World Judo Tour event each delegate is responsible to follow:

- The rules to enter the host country
- The Local Organising Committee's (LOC) Government COVID-19 measures
- The IJF COVID-19 Protocol rules

The LOC Government measures may be stricter than those detailed in the IJF COVID-19 protocol or vice versa, the stricter rules MUST be followed.

INSURANCE

It is the responsibility of the National Federation to ensure that in addition to their normal insurance they have sufficient insurance in place to cover any COVID-19-related costs, including repatriation. The LOC of the event and the IJF / OJU / PJC accept no liability for any claims relating to cancellation of the event due

to COVID-19 or medical costs for any COVID-19 related illness that may affect a National Federation delegation member during the event.

BEFORE TRAVELLING

- Passports must be valid for at least 6 months from the date of arrival.
- Check if you need a visa, and if yes, request it from the LOC according to the details in the visa section.
- Get an Invitation Letter from the LOC (eventos@judoperu.org)
- Send travel information (arrival and departures) to LOC (eventos@judoperu.org)
- Book accommodation with the LOC and send a detailed rooming list. Last minute changes can be accommodated while the delegation waits on the bus or outside the hotel.
- Check host country entry requirements and airline requirements (if applicable).
- Send in advance to bioseguridad@judoperu.org negative individual medical PCR COVID-19 test certificate(s) in English or local language.
- Send just before arrival to bioseguridad@judoperu.org an individual Liability Release Waiver (LRW). The form can be found in annex

ENTERING THE HOST COUNTRY

Each individual is responsible to ensure they follow the entry rules (passport validity, visas, entry permission letter, COVID-19 etc.) for the host country. Entry rules may be subject to change, the current information can be found here: <https://vuelafacil.pe/>

TIMELINE	ACTION EVERYONE
Arrival to country	As per the country rules. If you intend to use the same PCR test to enter the country and to enter the bubble, please, make sure that you meet both the airline/ country and PJC PCR requirements.
ALL PRE-EVENT COVID-19 DOCUMENTS MUST BE SENT TO bioseguridad@judoperu.org BEFORE TRAVELLING	

ENTERING THE EVENT BUBBLE WHICH IS OPEN FROM: 6 April 2022

The event venues (hotels, sport hall, training hall etc.) will be classified as bubbles and to reduce risk a “bubble to bubble” concept will be used. People are NOT allowed to leave their bubble as contamination could occur endangering the safety of the event and the health of the participants. Each individual is responsible to ensure they follow the IJF COVID rules for entry to the bubble.

ATHLETES ONLY	
TIMELINE	ACTION
FULLY VACCINATED Arrival and entry to event bubble.	Maximum 4 days (96 h) before arrival to the bubble: 1 PCR test. Upon arrival to the bubble: 1 PCR test (Isolate until negative result received). Before weigh-in: 1 rapid antigen test.

ALL OTHERS (COACHES, DOCTORS ETC.) EXCEPT ATHLETES	
TIMELINE	ACTION
FULLY VACCINATED Arrival and entry to event bubble.	Maximum 4 days (96 h) before arrival to the bubble: 1 PCR test. Upon arrival to the bubble: 1 PCR test (Isolate until negative result received).

ACCORDING TO CURRENT REGULATIONS IN PERU, PEOPLE OVER 12 YEARS OF AGE MUST BE FULLY VACCINATED TO ENTER HOTELS, COLISEUMS, AND OTHER PLACES.

To maintain the required safety level at the IJF/PJC events, the following variants of vaccination are recognized as complete vaccination and the bearers as “fully vaccinated” within the validity period. In case the validity expires during an event, the status is upheld until the last day of the event.

The IJF accepts all vaccination types, not only EMA or WHO approved products.

Type of protection	Minimum time elapsed	Maximum time elapsed
1 dose vaccines (Janssen, Sputnik Lite, or other)	Minimum 28 days from receiving the dose	Maximum 6 months from receiving the dose
2 doses of any 2 dose vaccines	Minimum 14 days from the 2nd dose	Maximum 6 months from the 2nd dose
Booster doses: 3rd or additional dose (2nd dose after a 1 dose vaccine)	Minimum 7 days from the last dose	To be determined by the WHO, currently no end of validity

Vaccination validity is subject to change according to WHO recommendations.

Please, note host country vaccination criteria may differ from the IJF's, always check the local rules before travelling.



If due to flight schedules you need to arrive earlier than the bubble opening, contact the LOC and they will assist you with a solution.

PCR TEST ON ARRIVAL TO BUBBLE

All participants must take a PCR immediately upon arrival to the event bubble.

Until arrival to the bubble PCR test results are obtained, all participants must remain in their hotel rooms, where water and any paid meals will be ensured until the receipt of the test results.

ANTIGEN TEST

Antigen test for athletes will be taken before their weigh-in with the results delivered before the official weigh-in.

POSITIVE PCR TEST PROCESS

In case of a positive test result, the host country Government procedure will be followed.

Anyone with a positive test **MUST** stay in the quarantine facility provided by the LOC. The cost must be paid by the National Federation.

Close contacts will be traced and may be isolated/quarantined depending on the host country Government COVID-19 measures, their definition of close contact may differ from that described in the IJF COVID-19 protocol.

DURING THE EVENT

- Wash/sanitise your hands regularly.
- Competitors should wash and disinfect their hands and feet regularly.
- No handshake - greet each other with a bow.
- Wear a mask at all times (exceptions: masks are not obligatory on the Field of Play tatami, on the warm-up tatami whilst warming up or on the training tatami whilst training). Masks must be worn in dining areas at all times, except when sitting eating.
- Maintain 1.5 m distance at all times, except for competitors during training, their contests and during warming up with ONE PARTNER.
- Submit yourselves to contactless temperature measurement. Anyone registering a high temperature will be asked to remain outside and their Delegation COVID-19 Manager, the LOC COVID-19 Manager and the IJF / PJC COVID-19 Manager will be contacted. An opportunity to recheck their temperature will be given, if it is still high a final decision will be made by the LOC COVID-19 Manager and the IJF / PJC COVID-19 Manager.



SYMPTOMS AFTER ARRIVAL

Anyone who experiences symptoms after arrival must immediately contact their Delegation COVID-19 Manager who will then contact the LOC and IJF / PJC COVID-19 Managers.

EXIT TESTS

Exit tests, if required, may be booked with the LOC, if required.

Where to book	At accreditation
PCR test price	75 US DOLLAR
Antigen test Price	45 US DOLLAR
Payment method	Cash US DOLLAR

IMPORTANT:

CURRENT LAWS ESTABLISH REQUIREMENTS TO ENTER PERU, AND OTHER REQUIREMENTS TO PARTICIPATE IN SPORTING EVENTS. ALL THESE REQUIREMENTS HAVE BEEN TAKEN INTO CONSIDERATION IN THESE OUTLINES. HOWEVER, AS IN THE WHOLE WORLD, THE MEASURES ARE CHANGING ACCORDING TO THE EPIDEMIOLOGICAL SITUATION, THEREFORE, THERE IS THE POSSIBILITY THAT THERE IS ANY CHANGE IN THE REQUIREMENTS.



PJC

PANAMERICAN – OCEANIA SENIOR CHAMPIONSHIPS
PANAMERICAN – OCEANIA MIXED TEAMS SENIOR CHAMPIONSHIPS

1. PROGRAMME

Date	Time	Activity	Location
Wednesday 6 April 2022	14:00 – 23:59	Bubble opening	Hotel
Tuesday 12 April 2022	09:00 – 12:00	Referee Seminar PJC/ IJF – Session 1	VIDENA
	10:00 – 12:00	Training Camp – Session 1	VIDENA
	14:00 – 17:00	Referee Seminar PJC / IJF – Session 2	VIDENA
	16:00 – 18:00	Training Camp – Session 2	VIDENA
Wednesday 13 April 2022	00:00 – 14:00	Last day of Entry to bubble Senior Championships Day 1	Hotel
	09:00 – 12:00	Referee Seminar PJC / IJF – Session 1	VIDENA
	10:00 – 12:00	Training Camp – Session 1	VIDENA
	14:00 – 17:00	Referee Seminar PJC / IJF – Session 2	VIDENA
	16:00 – 18:00	Training Camp – Session 2	VIDENA
	16:00 – 19:00	Accreditation	Hotel Exe
Thursday 14 April 2022	00:00 – 14:00	Last day of Entry to bubble Senior Championships Day 2	Hotel
	09:00 – 12:00	Accreditation	Hotel Exe
	14:00	Draw	Online
	From 15:00	Antigen test for athletes Senior Championships Day 1	Hotel
	TBC	Judo backnumber pre-control Senior Championships Day 1	Hotel Exe / Pullman
	17:30 – 18:00	Unofficial weigh-in Senior Championships Day 1	Hotel Exe / Pullman
	18:00 – 19:00	Weigh-in Senior Championships Day 1	Hotel Exe / Pullman
Friday 15 April 2022	Competition Day 1 -W -48 kg, -52 kg, -57 kg, -63 kg; M: -60 kg, -66 kg, -73kg		
	00:00 – 14:00	Last day of Entry to bubble Mixed Teams Senior Championships	Hotel
	TBC*	Preliminaries	VIDENA
	16:00	Final Block	VIDENA
	From 15:00	Antigen test for athletes Senior Championships Day 2	Hotel
	TBC	Judo backnumber pre-control Senior Championships Day 2	Hotel Exe / Pullman
	17:30 – 18:00	Unofficial weigh-in Senior Championships Day 2	Hotel Exe / Pullman
	18:00 – 19:00	Weigh-in Senior Championships Day 2	Hotel Exe / Pullman
Saturday 16 April 2022	Competition Day 2 -W -70 kg, -78 kg, +78 kg; M: -81 kg, -90 kg, -100 kg, +100 kg		
	TBC*	Preliminaries	VIDENA
	16:00	Final Block	VIDENA



Date	Time	Activity	Location
Saturday 16 April 2022	From 15:00	Antigen test for athletes Mixed Teams Senior Championships	Hotel
	TBC	Judo backnumber pre-control Mixed Teams Senior Championships	Hotel Exe / Pullman
	17:30 – 18:00	Unofficial weigh-in Mixed Teams Senior Championships	Hotel Exe / Pullman
	18:00 – 19:00	Weigh-in Mixed Teams Senior Championships	Hotel Exe / Pullman
Sunday 17 April 2022	Competition Day 3: Mixed Teams Senior		
	09:30*	Preliminaries	VIDENA
	TBC*	Final Block	VIDENA

* The start time will be confirmed once the final number of athletes is known.

2. DATES

Panamerican – Oceania Senior Championships: Friday 15 April and Saturday 16 April 2022.
Panamerican – Oceania Mixed Teams Senior Championships Sunday 17 April 2022

3. REGISTRATION

Timeline	Deadline	Days before opening the bubble
Event inscription (judobase)	15 March 2022	22
Hotel Reservation	28 February 2022	37
Visa application (with passport photocopies) *	10 March 2022	27
Hotel payment	10 March 2022	27
Arrival and departure information	20 March 2022	17

*Entry letters and visa applications will only be accepted for people who are inscribed in judobase.

Registration must be done with the IJF online registration system at <http://www.judobase.org>. Delegations that do not register within the date indicated on that website will not be able to participate. **Registration deadline: March 15, 2022**

4. PARTICIPATION RULES

Any delegate is eligible to inscribe in the competition provided he/she is:

- Not under a disciplinary suspension.

- Not under suspension for anti-doping rule violation.
- Not under medical suspension.
- Healthy and fit for competition.
- Do not carry any communicable diseases that may risk other delegates' health.
- Participating athletes must be born in 2007 (15 years in the calendar year) or before.
- Sufficient technical knowledge (know the terminology and can execute all the techniques in the IJF SOR Appendix H) and understand fully the IJF sport and refereeing rules.
- Participants must also satisfy all regulations in the IJF COVID-19 Protocol and COVID-19 local protocol.

Panamerican - Oceania Senior Championships

Panamerican - Oceania Senior Mixed Teams Championships

- The date of birth and nationality must be accredited by means of an official PASSPORT from the country of origin.
- Only national teams from federations that are members of **PJC and OJU**
- Minimum age: Born until 2007.

5. LOCAL ORGANISING COMMITTEE (LOC)

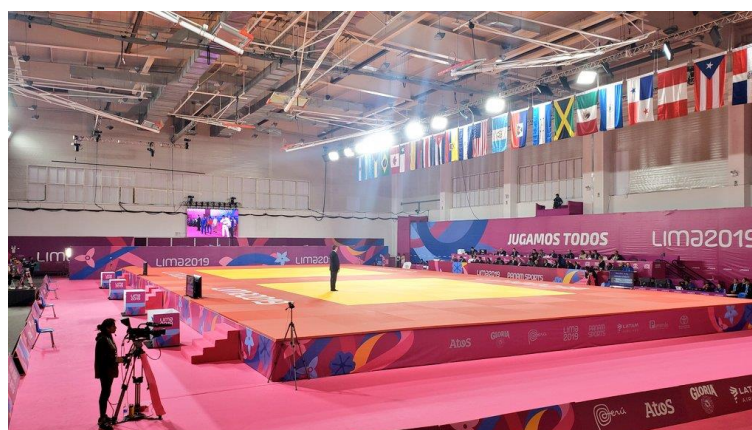
Name	Peruvian Judo Federation
Address	Avenida Del Aire S/N (cuadra 8) - Videna Puerta N°2, San Luis - Lima - PERÚ
Telephone number	+(51) 965884642
Email	eventos@judoperu.org
Website	www.judoperu.org

6. COMPETITION VENUE

Polideportivo 1 - VIDENA / **3 mats**

Avenida del Aire S/N (cuadra 7) - Videna Puerta N°1, San Luis

Lima - PERU



7. ENTRY TO HOST COUNTRY

Each participant needs an invitation letter from the LOC

For those participants who need a visa the LOC will assist where possible but having the correct visa is the responsibility of each participant.

Please note that visa approvals or rejections are done by the Government authorities and the LOC has no control over this and cannot be held responsible for any rejections.

Complete the form	Lima_Panamerican_Oceania_Championships_2022_Visa
Deadline	10 March 2022
LOC Contact	Kimberlie Rivera
LOC Email	eventos@judoperu.org
LOC Telephone	+(51) 965884642

8. TRANSPORT

The organiser will provide official transportation for competing delegations during the competition. This transportation service includes airport transfers. Only official transport must be used whilst in the bubble (no taxis, no private cars etc.).

To guarantee airport transfers, arrival, and departure details for each participant, must be sent to the organizer by **20 March 2022**.

Transfers for this event will be arranged from/to:	
Airport	Jorge Chávez International (LIM)
Deadline	20 March 2022
LOC Contact	Kimberlie Rivera
LOC Email	eventos@judoperu.org
LOC Telephone	+(51) 965884642

9. ACCOMMODATION

All delegations, who inscribe for an IJF / PJC / OJU event, must reserve their accommodation in one of the official hotels published in the event outlines. The reservation must be made with the LOC (not directly with the hotel).

Any damage to hotel property resulting from the stay of a National Delegation will be charged to the National Federation and must be paid in full. Delegations are kindly requested not to dry clothing (including judogi) or have training sessions in the corridors of the official hotels.



Complete the form	Panam PER 2022 Form Accommodation
Deadline	28 February 2022
LOC Contact	Kimberlie Rivera
LOC Email	eventos@judoperu.org
LOC Telephone	+(51) 965884642

Due to the COVID-19 situation, all participants must stay at the official hotel for the entire period of their stay, as the **bubble-to-bubble** concept is used at this event. People sharing a room must check-in at similar time, due to quarantine rules. If someone checks in later, the first person to check in will need to stay in quarantine until the 2nd person is released from quarantine.

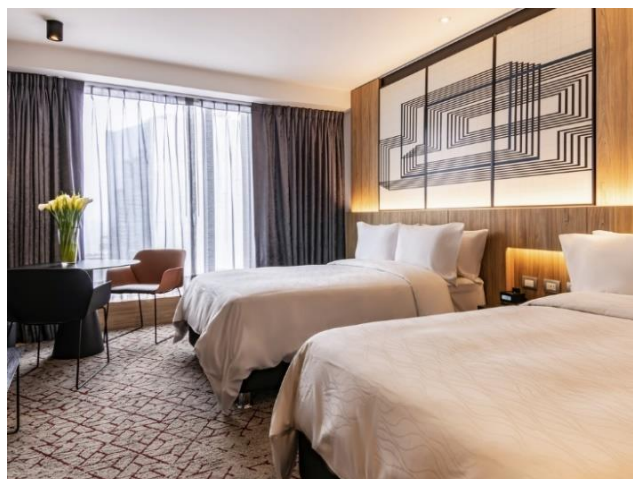
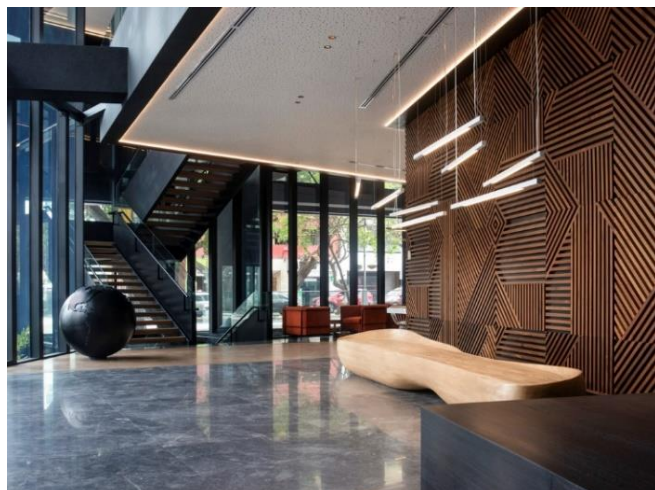
Delegations that arrive by official transport and have been pre-accredited at the airport upon arrival of the flight from their country of origin are the only ones that may enter the hotel.

Anyone who leaves the health protocol "bubble" will not be admitted again to be part of the delegation. Please carefully read the protocol that will be found later

Note: The LOC will do their best to provide your first choice of accommodation but, as rooms might be limited, this cannot be guaranteed. After the accommodation deadline, the organiser cannot promise rooms in the hotels detailed in these outlines and another official hotel may be added.

- **VIP HOTEL:** For National Federation presidents

PULLMAN ****	
Address	Avenida Juan Fanning 515 – 525, Miraflores
Phone	(01) 3131430
Website	https://all.accor.com/hotel/B464/index.es.shtml
Check in	15:00
Check out	12:00
Early check in	Subject to availability (50% of the price per night per person)
Late check out	Subject to availability (50% of the price per night per person)



All prices are per person per night in **US Dollars** and include lodging, food (breakfast, lunch, and dinner), round trip transportation from the airport to the Hotel, round trip from the Hotel to the competition venue.

PULLMAN ****		
Room type	DISCOUNTED payment until March 01*	REGULAR payment From March 02
Single	USD 225	USD 250
Twin	USD 205	USD 230

Distance and approximate travel time from hotel to:	Km	Time (hh:mm)
Training	8.7	00:30
Accreditation	1.4	00:08
Draw	The draw will be held online	
Sport hall	8.7	00:30

- DELEGATION HOTEL:

EXE MIRAFLORES ****	
Address	Calle 290 Alcanfores, Miraflores
Phone	(01) 2061100
Website	https://exehotelmiraflores.com-hotel.com/es/
Check in	14:00
Check out	12:00
Early check in	Subject to availability (50% of the price per night per person)
Late check out	Subject to availability (50% of the price per night per person)



All prices are per person per night in **US Dollars** and include lodging, food (breakfast, lunch, and dinner), round trip transportation from the airport to the Hotel, round trip from the Hotel to the competition venue.

EXE MIRAFLORES ****		
Room type	DISCOUNTED payment until March 01*	REGULAR payment From March 02
Single	USD 210	USD 235
Twin	USD 190	USD 215
Triple	USD 170	USD 195

Distance and approximate travel time from hotel to:	Km	Time (hh:mm)
Training	8	00:25
Accreditation	In hotel	
Draw	The draw will be held online	
Judogi pre - control	In hotel	
Weigh in	In hotel	
Sport hall	8	00:25

CASA ANDINA SELECT ****	
Address	Calle Schell 452, Miraflores
Phone	(01) 4167500
Website	https://www.casa-andina.com
Check in	14:00
Check out	12:00
Early check in	Subject to availability (50% of the price per night per person)
Late check out	Subject to availability (50% of the price per night per person)



All prices are per person per night in **US Dollars** and include lodging, food (breakfast, lunch, and dinner), round trip transportation from the airport to the Hotel, round trip from the Hotel to the competition venue.

CASA ANDINA SELECT ****		
Room type	DISCOUNTED payment until March 01*	REGULAR payment From March 02
Single	USD 210	USD 235
Twin	USD 190	USD 215
Triple	USD 170	USD 195

Distance and approximate travel time from hotel to:	Km	Time (hh:mm)
Training	7.8	00:23
Accreditation	Exe Miraflores – 0.19	Exe Miraflores – 00:03
Draw	The draw will be held online	
Judogi pre - control	Exe Miraflores – 0.19	Exe Miraflores – 00:03
Weigh in	Exe Miraflores – 0.19	Exe Miraflores – 00:03
Sport hall	7.8	00:23

IBIS BUDGET ALCANFORES ***	
Address	Calle Alcanfores 699, Miraflores
Phone	(01) 7301700
Website	https://ibis.accor.com/discovering/ibis-budget-hotel/index.es.shtml
Check in	14:00
Check out	12:00
Early check in	Subject to availability (50% of the price per night per person)
Late check out	Subject to availability (50% of the price per night per person)

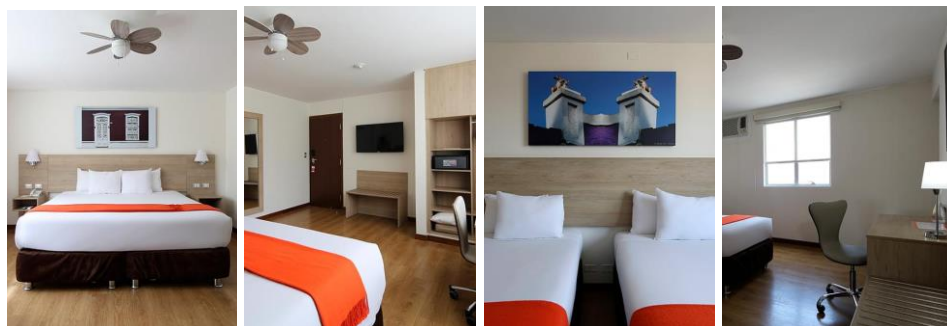


All prices are per person per night in **US Dollars** and include lodging, food (breakfast, lunch, and dinner), round trip transportation from the airport to the Hotel, round trip from the Hotel to the competition venue.

IBIS BUDGET ALCANFORES ***		
Room type	DISCOUNTED payment until March 01*	REGULAR payment From March 02
Single	USD 195	USD 220
Twin	USD 180	USD 205
Triple	USD 165	USD 190

Distance and approximate travel time from hotel to:	Km	Time (hh:mm)
Training	7.3	00:20
Accreditation	Exe Miraflores – 0.5	Exe Miraflores – 00:04
Draw	The draw will be held online	
Judogi pre - control	Exe Miraflores – 0.5 Pullman – 0.6	Exe Miraflores – 00:04 Pullman – 00:05
Weigh in	Exe Miraflores – 0.5 Pullman – 0.6	Exe Miraflores – 00:04 Pullman – 00:05
Sport hall	7.3	00:20

CASA ANDINA ESTÁNDAR ***	
Address	Av. Petit Thouars 5444, Miraflores
Phone	(01) 4470263
Website	https://www.casa-andina.com
Check in	14:00
Check out	12:00
Early check in	Subject to availability (50% of the price per night per person)
Late check out	Subject to availability (50% of the price per night per person)



All prices are per person per night in **US Dollars** and include lodging, food (breakfast, lunch, and dinner), round trip transportation from the airport to the Hotel, round trip from the Hotel to the competition venue.

CASA ANDINA ESTÁNDAR ***		
Room type	DISCOUNTED payment until March 01*	REGULAR payment From March 02
Single	USD 195	USD 220
Twin	USD 180	USD 205
Triple	USD 165	USD 190

Distance and approximate travel time from hotel to:	Km	Time (hh:mm)
Training	7	00:20
Accreditation	Exe Miraflores – 0.8	Exe Miraflores – 00:04
Draw	The draw will be held online	
Judogi pre - control	Exe Miraflores – 0.8	Exe Miraflores – 00:04
Weigh in	Exe Miraflores – 0.8	Exe Miraflores – 00:04
Sport hall	7	00:20

IMPORTANT: In order to **pay WITH A DISCOUNT**, the participants must be registered in JUDOBASE and the National Federation must have sent proof of the bank transfer to eventos@judoperu.org until February 28, 2022 or if the National Federation will make the payment in cash upon arrival must have confirmed the invoice with a letter from its president through eventos@judoperu.org until February 28, 2022.

PAYMENT

According to the IJF rule enacted on the 2 December 2012 in Tokyo, "the organising country should not request penalties fee for participating countries who cannot make bank transfers but can pay in cash upon arrival. Those countries who cannot make bank transfers should inform the organisers well in advance that they will pay cash on arrival".

The countries are responsible for the payment of the expenses derived from the banking operation, therefore the payments made by bank transfer will have an added cost of 5% of the total amount.

All bank fees and bank transfer costs must be paid by the participating National Federation to the following bank:

Beneficiary's Name	Federación Deportiva Peruana de Judo
Beneficiary's Address	Calle Marcos Dongo 192 - 190, Pueblo Libre, Lima - PERÚ
Beneficiary's RUC	20196795350
Bank Name	BBVA Continental
Bank Address	Avenida República de Panamá 3055, San Isidro, Lima - PERÚ
Bank Account	0011-0179-0100065287-93
SWIFT Code	BCONPEPL
Payment Reference	Federation Name_CON Invoice N° PanamPeru2022 <i>Ejemplo: Federación Peruana de Judo_PER 002 PanamPeru2022</i>

If payment is being made by bank transfer the bank information must be inserted correctly and completely on the transfer document and any procedures related to amendment of the bank transfer must be done before arrival. Delegations must ensure that all bank charges are paid at their end so that the organisers receive the correct amount of funds without any deductions. Delegation must have proof of the bank transfer, upon arrival.

Countries must inform the organizers of the number of participants before the deadline. Possible extra room reservations at check-in will also be surcharged with 10%. The rooms "no-show" will result in 100% of the charge of hotel expenses. Room cancellations cannot be made at check-in.

If rooms are cancelled the LOC has the right to charge as follows:	
No refund, 100% of the hotel costs must be paid from	10 March 2022
With 50% refund, 50% of the hotel expenses must be paid from	01 March 2022
Cancellations with refund are allowed until	28 February 2022

10. TRAINING

Training during the event is the responsibility of the organising federation. Planning and scheduling of training sessions will be organised taking into consideration requests made by delegations daily on a first request made first served basis. To book training contact the LOC.

Training venue	Centro de Alto Rendimiento de Judo – VIDENA
Address	Avenida Del Aire S/N (cuadra 8) - Videna Puerta N°2, San Luis
Location	Piso 1 – Polideportivo 2
Training dates	06 April 2022 – 10 April 2022
Training times	09:00 – 12:00 / 14:00 – 18:00
LOC Contact	Kimberlie Rivera
LOC Email	eventos@judoperu.org
LOC Telephone	+(51) 965884642

11. MEDALS

First place - Gold medal

Second place – Silver medal

Third places (x2) - Bronze medals

- At the time of receiving the award, the athlete must present himself with a WHITE judogi.
- Any competitor who has won a medal must attend the ceremony and receive the medal in person. If an athlete is absent during the award ceremony for an invalid reason, he will lose his right to the medal.
- Competitors are strictly prohibited from bringing their national flags or similar identification to the podium.
- Any religious, political, personal or commercial demonstration, or wearing any hat or other head covering or any other paraphernalia, is prohibited.

12. DOPING CONTROL

- It is important that each delegation knows the doping control protocol.
- Controls will be carried out in accordance with the IJF Anti-Doping Rules and the Organization and Sport Regulations, before concluding the final block.
- Competitors must report to the doping control station immediately after signing the notification form. Pursuant to WADA ISTI Art. 5.4.4, prior to doping control, athletes may participate in the award ceremony and fulfill their media commitments or receive medical treatment if necessary.
- The selected competitors will be constantly accompanied by an official chaperone (designated by the organizing committee) from the moment of notification until their arrival at the Doping Control Station. A person of the athlete's choice (team doctor, coach, physical trainer, head of delegation, etc.) may accompany them.

13. TRAINING CAMPS

Due to COVID-19 safety precautions, the Organizing Committee will hold a training camp held in the event bubble on April 12 and 13, 2022, after the cadet - junior event and before the senior event.

Training venue	Centro de Alto Rendimiento de Judo – VIDENA
Address	Avenida Del Aire S/N (cuadra 8) - Videna Puerta N°2, San Luis
Location	Piso 1 – Polideportivo 2
Training dates	12 April 2022 – 13 April 2022
Training times	10:00 – 12:00 / 16:00 – 18:00
LOC Contact	Kimberlie Rivera
LOC Email	eventos@judoperu.org
LOC Telephone	+(51) 965884642

14. POST EVENT SURVEY

After each event a questionnaire will be sent for your constructive comments and feedback on how to improve the next edition of the event. You can also email info@panamjudo.org

15. PJC AFFILIATION

All participants in these events must be registered and affiliated before entering the bubble. Every person without exception that appears in the official registry needs to have their current affiliation, which can be done individually or as a federation through <http://panamjudo.org/> affiliations section.

Affiliation cost **\$100 USD**.

Membership must be paid online; cash will not be accepted for membership payment at Event Registration.

16. GENERAL INFORMATION

FUNDAMENTAL PRINCIPLES

All local and international media representatives participating in the event described in these outlines must respect and accept the authority of the IJF Officials, the IJF Statutes, the IJF Sports and Organisation Rules (SOR, <https://www.ijf.org/ijf/documents/21>), and the IJF Anti-Doping Rules (<https://www.ijf.org/ijf/documents/17>). Individuals deemed to have acted against the IJF, its principles or purposes should be subject to suspension or expulsion from the event and/or cancellation of their accreditation cards



INSURANCE

Each National Federation is directly responsible for its athletes (the control of non-pregnancy and the control of gender). It must assume all responsibility for accident and health insurance as well as civil liabilities during all IJF / PJC / OJU events for everyone under their charge.

National Federations are responsible to provide insurance guarantees to their delegates during any IJF/PJC/OJU event. The LOC of the event and the IJF/PJC/OJU will not be responsible in the absence of insurance.

The LOC of the event and the IJF have no liability for any claims of injury, illness or death arising from the travelling to and the participation in this event

All subsequent or extraordinary medical attention, such as injury and/or illness that requires hospitalization, treatments, surgical interventions and medications, will be assumed, in terms of costs, by the federation of each country. Therefore, all participating delegations and judokas will exempt the event organizers from liability for any mishap, injury, accident, illness or death that may arise inside or outside the competition venue or in the trips and transfers related to this event.

CONSENT FOR USE OF DATA/PHOTOGRAPHY/VIDEOS/FILMING

Delegates inscribed by their National Federations for IJF/PJC/OJU events consent to IJF/PJC/OJU and its media partners to use content of them, including data, live results, photos and/or video recordings (hereafter referred to as Media). This media may be obtained from the National Federations and IJF/PJC/OJU. Media could be used in print and digital media formats, including print publications, websites, e-marketing, posters, banners, advertising, film, broadcast, social media, educational and other purposes.

If a delegate does not give consent for use of data, photography, videos and filming then the National Federation must inform the International Judo Federation by writing to registration@ijf.org

COMPETITION RULES

The competition will be conducted in accordance with the IJF SOR (<https://www.ijf.org/ijf/documents/21>) and the IJF Anti-Doping Rules (<https://www.ijf.org/ijf/documents/17>).

System of competition: for 6 or more athletes/teams quarter-final (last 8) repechage, for 5 or less athletes/teams low numbers rules for WRL events, duration of contests: four (4) minutes (real time).

Panamerican – Oceania Senior Championships

Women: -48kg, -52kg, -57kg, -63kg, -70kg, -78kg, +78kg

Men: -60kg, -66kg, -73kg, -81kg, -90kg, -100kg, +100kg



Panamerican – Oceania Mixed Team Senior Championships

Mixed Teams: F-57 kg, M-73 kg, F -70 kg, M -90 kg, F +70 kg, M +90 kg

INSCRIPTION OF DELEGATES

Only entries of PJC / OJU member National Judo Federations will be accepted.

Athletes can be entered in ONLY one weight category per IJF WRL event.

Each person can only be inscribed with one function (i.e. athlete, coach, referee, team official etc.) per event. The National Federation is responsible for obtaining legal approval and permission for minor athletes to compete in competitions. When travelling with minors the team official/coach must have all the necessary documents in place that authorises them to act on behalf of the parents/guardians *"in loco parentis"*. This also applies to doping control. The National Federation must ensure that minor athletes have their parental/guardian permission to undergo testing

Panamerican – Oceania Senior Championships

Each National Federation may enter:

- Up to 9 entries for women with maximum 2 athletes per category.
- Up to 9 entries for men with maximum 2 athletes per category.

Panamerican – Oceania Mixed Teams Senior Championships

Each National Federation may enter 1 mixed team with maximum 2 athletes per category.

Non-competing athletes or training partners can be inscribed as judoka

ACCREDITATION

Accreditation and delivery of credentials will be carried out according to the COVID19 health protocol on the days that are in the program. Accreditation will be carried out through a shift system.

At least one team delegate must attend on time to confirm the entries of all athletes and officials with a signature on the delegation confirmation list. A delayed appearance or no-show may result in the exclusion of all participants from the draw and the event.

All competitors, coaches and delegates will be provided with credentials, which they must always carry. The passports of all participants must be always available, if required.

Quota for officials for accreditations (includes team officials, coaches, doctors, and physiotherapists):

- One – four (1-4) competitors = three (3) officials.
- Five – nine (5-9) competitors = five (5) officials.
- 10 or more competitors = seven (7) officials.



The accreditations for National Federation president, referee and judoka are not included in the above calculation.

The fee for additional team official(s) (who must be inscribed in judobase) is 100 US\$ per accreditation, to be paid to the LOC. Replacement of lost or forgotten accreditation will be charged at 50 US\$ to be paid to the PJC.

DRAW

Up to a maximum of the top eight athletes among the entered athletes in each weight category will be seeded based on their IJF WRL position. The draw will be held online.

OFFICIAL JUDOGI

Athletes must compete wearing an IJF approved judogi (white and blue) from one of the following official suppliers can be found here: www.ijf.org/supplier-list For further information on the judogi rules please refer to the IJF SOR (<https://www.ijf.org/ijf/documents/21>).

OFFICIAL IJF BACKNUMBER

Each competitor is obliged to have sewn on the back of his judogi a backnumber bearing their last (family) name and National Olympic Committee abbreviation. The last (family) name (and any part of their given (first name) on the back number must have the same letters as that registered in judobase as this database provides the accreditation cards, athlete name on TV graphics and scoreboard etc. The top of the backnumber must be fixed horizontally and centrally three (3) cm from the bottom of the collar.

The backnumber can only be ordered from www.officialbacknumber.com or www.mybacknumber.com

JUDOGI PRE-CONTROL

The Education and Coaching Commission will control the backnumber on the judogi jacket the evening before the competition. The checking process will start half an hour prior to the unofficial weigh-in and will end at the same time as the official weigh-in (see programme for times). The backnumber and publicity should comply with the current IJF judogi regulations.

The judogi control will be done before each contest.

WEIGH IN

The weigh-in will be carried out in accordance with the IJF SOR. The official weigh-in for athletes will be scheduled the day before the competition (see programme for times)

COACHING

Coaches nominated by their National Federations should respect the IJF Code of Ethics and IJF SOR. Any coaches not adhering to these rules could be subject to disciplinary action.