

**WEAR A MASK**  
AT ALL TIMES IN PUBLIC  
SPACES AND VENUES  
Failure to follow mask protocol  
will result in disqualification

## REQUIRED



**Airport**



**Transport**



**Hotel**



**Accreditation**



**Medal Ceremony**



**Venue**



**Weigh-in**



**Judogi Control**



**Medical room +  
Doping Control**

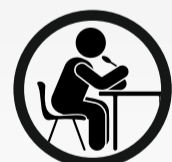


**Interviews**

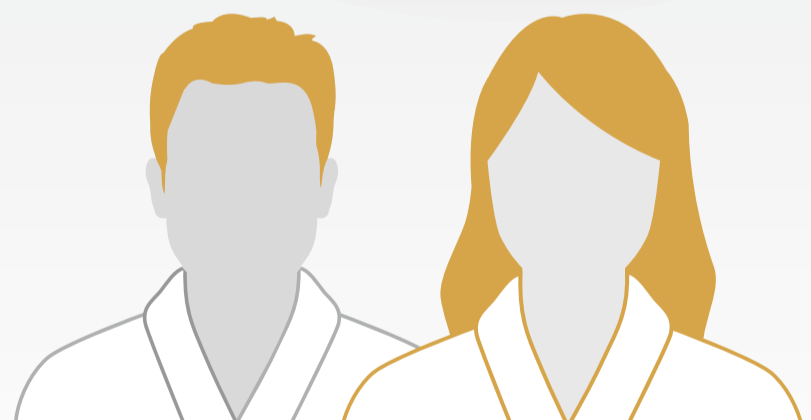
## NOT REQUIRED



**On Field of Play**



**When sitting to  
eat during meals**



## OPTIONAL



**During warm-up on Tatami**

